

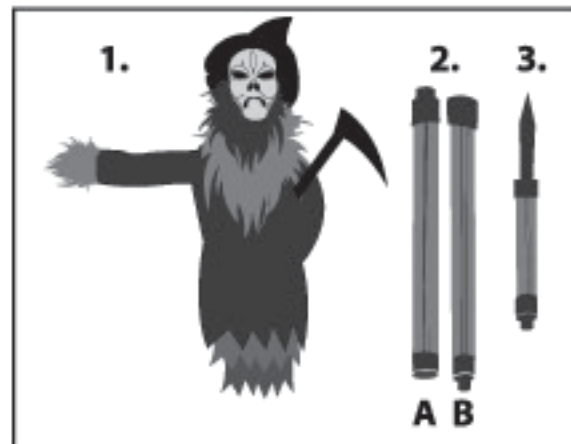
POINTING HARVESTER

INSTALLATION AND OPERATING INSTRUCTIONS
KEEP ALL PLASTIC AND WIRE PARTS AWAY FROM CHILDREN

SETUP INSTRUCTIONS : POINTING HARVESTER

PARTS:

1. HEAD WITH BODY AND MODULE
2. POLE (2)
3. YARD STAKE



1.) Insert male end of **POLE** into **HEAD WITH BODY AND MODULE** and twist to lock.
(Match A to A)

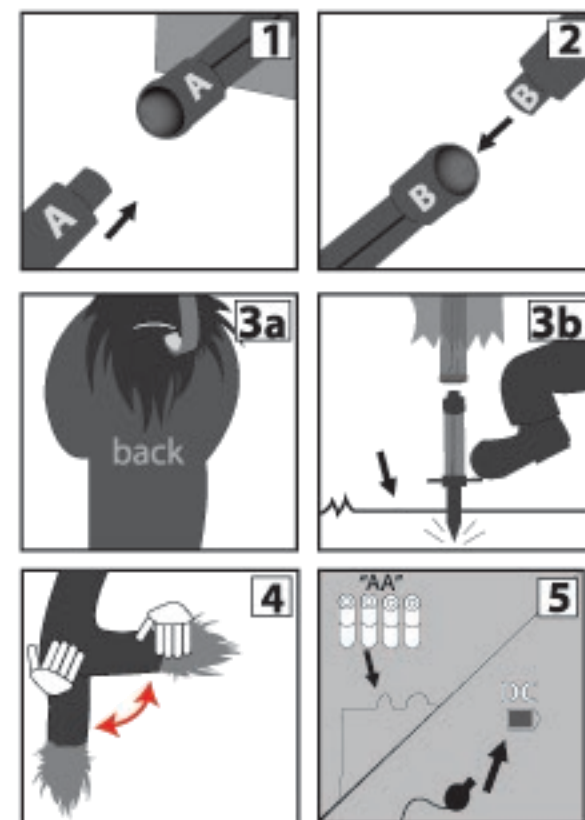
2.) Insert male end of second **POLE** into female end of **POLE A**, twist to lock.

3.) Hanging Display - For hanging use, using metal loop on back of **BODY**, hang door hanger or other hanging device and display where desired.
(hanging device not included) See illustration 3a.

Yard Display - For staked use, insert **POLE WITH YARD STAKE** end into soft ground.
Then attach **POLES** together and twist to lock.
(Match **C** to **C**) See illustration 3b.

4.) Hold Harvester's pointing arm, cupping it by the elbow, and **gently** straighten out wire arm.

5.) Insert 4 brand new AA batteries into battery compartment located on **HEAD WITH BODY AND MODULE** under Harvester's head, or attach optional 6V 2A adapter (sold separately).



Note: Turn switch on the module to ON to operate in Timer/Sound & Motion mode (Item will function with 1.5 minute breaks between cycles – clap or move during 1.5 minute break to instantly activate item again). Leave switch in OFF position when not in use.

Outdoor Warnings: For best overall performance, we recommend you operate your item in a sheltered outdoor area. We also recommend you bring your item indoors during adverse weather (extreme cold, strong winds and/or rain). This item operates best outdoors in temperatures above freezing (32°F). Tekky Toys recommends using fresh alkaline batteries for best operating performance.

OPTIONAL FOOTPAD SETUP

Follow initial installation instruction first.

1. Connect wire from optional footpad to the jack labeled FOOTPAD located on the base.
2. Place the switch on the base into 'FOOTPAD' position to enable FOOTPAD activation.
3. Step on FOOTPAD to activate the scary sequence.

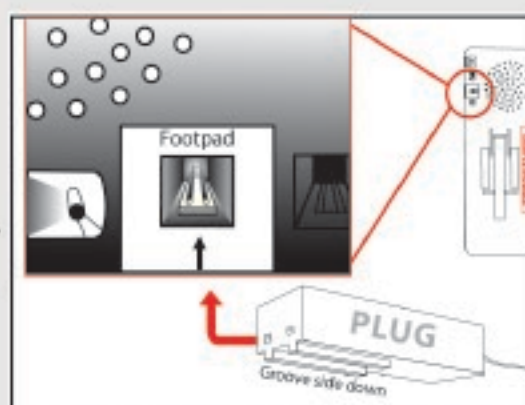
NOTE:

When plugging in, make sure pins line up properly with holes on plug. Align plug, groove side down, with the notch.

CAUTION!

Not aligning the plug to jack properly may cause permanent damage to footpad jack of your item. **DO NOT** use excessive force when inserting plug.

*Footpads are sold separately and can be purchased online at: www.tekkytoys.com



VISIT US: WWW.TEKKYTOYS.COM

Surface Washable Only.
ALL NEW MATERIALS : PLASTIC, POLYESTER,
POLYESTER FIBER

Battery Powered:
Requires 4 AA Alkaline Batteries (not included)
DC Adapter Ready 6V 2A (not included)
** Footpad and DC adapter sold separately and can
be purchased at: www.tekkytoys.com

Pointing Harvester is a trademark of Tekky Toys.
Copyright © 2012 Tekky Toys.
All Rights Reserved.
MADE IN CHINA

SMART PHONE SCAN SETUP VIDEO



****No weight should be placed onto item****

Warning! This item is not a toy. For decoration only. Small parts, choking hazard.
This product is intended for use by persons 15 years of age and older.
Not intended for use by children ages 14 years and younger.

WARNING
DO NOT TURN THIS ITEM ON UNTIL YOU HAVE COMPLETELY FINISHED ASSEMBLY.
Stay clear of item while operating.

